

融通科技產業集團

**RongTong Science & Technology Industry Group**

# INTRODUCTION

## **Rongtong Technology Industry Group,**

founded in 2005, is a technology investment group focused on hi-tech industrial park construction & operation, transformation of scientific and technological achievements, technology company incubator, technology venture capital and consulting services area. Investment covers the area of real estate, mineral resources, new energy, new material, biomedical, electronics, cultural industries, modern services, modern equipment manufacturing and other industries. Our alliance includes Tsinghua University, Peking University, Nankai University, Beijing Normal University, Beijing University of Post & Telecommunications (Bupt), University of Shanghai for Science and Technology, Chinese Academy of Sciences (CAS) branch, CAS Institute of Semiconductors, CAS Institute of Automation, University of Waterloo, University of Toronto, University of Western Ontario, HTX, Uppsala University, Royal Caroline Institute, etc.

**NURSERY**



**INCUBATOR**



**ACCELERATOR**



**HI-TECH PARK**



A close-up photograph of a small, vibrant green seedling with two leaves and a single stem, growing out of a cluster of smooth, blue-grey stones. The background is softly blurred, emphasizing the plant.

**ADVANTAGE**

**PROJECT**

A detailed close-up of gold bullion. In the foreground, several gold coins are visible, including one with a profile of a figure. Behind them are large, rectangular gold bars. The warm, golden light creates a sense of wealth and value.

**CAPITAL**

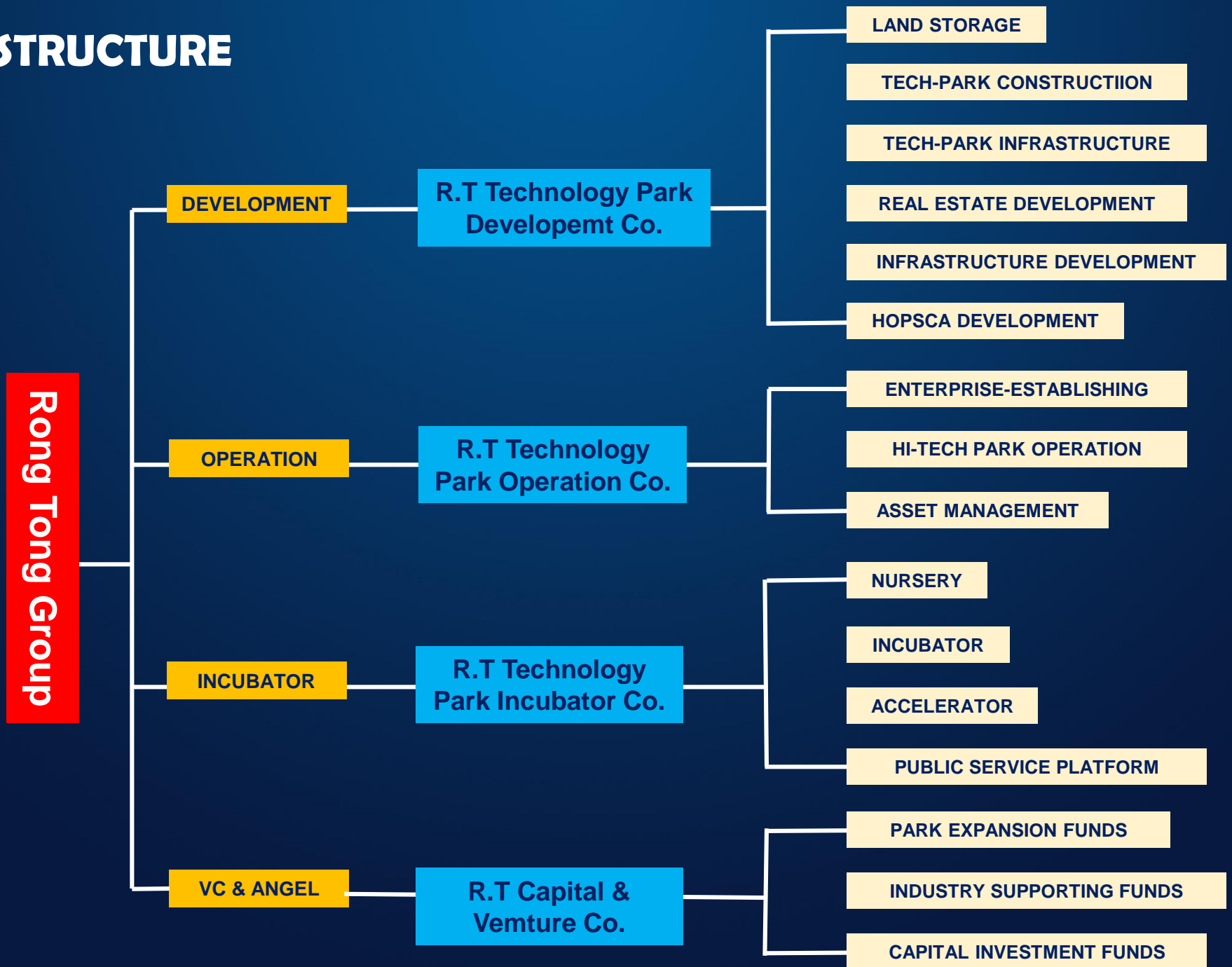
A photograph of a modern architectural structure at dusk. The building features a long, continuous wall of floor-to-ceiling glass panels. Inside, lights are on, and the structure is illuminated from within. In the foreground, there's a rooftop garden with green plants and several white, modern armchairs arranged on a wooden deck.

**PLATFORM**

A wide-angle shot of a grand, circular interior space, likely a legislative chamber or a large hall. The ceiling is a masterpiece of design, featuring a large, illuminated red star in the center, surrounded by concentric circles of smaller lights. The seating area is filled with rows of people, and the overall atmosphere is one of formal grandeur.

**GOVERNMENT  
RELATION**

# STRUCTURE







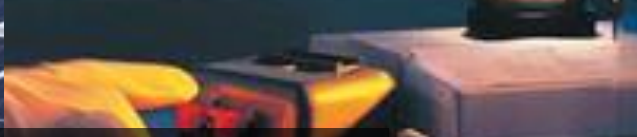
**ENERGY**



**BIOMEDICAL**



**ELECTRONIC**



**INVESTMENT**

**FIELD**





**INVESTMENT FIELD**

**CULTURE**



**MANUFACTURING**



**NEW MATERIAL**





# 清华融通科技产业园

## THU R.T. INDUSTRIAL PARK

Area: 196268sqm

Address: Tangshan ,Hebei

Incubated Enterprises: 80

Specialized: New Material, New Energy



An aerial photograph of the CAS R.T. Intelligence Park. The park features several modern, multi-story buildings with large glass windows and brick accents. The buildings are arranged in a cluster, with a central green space containing trees and a small pond. The sky is blue with some clouds, and the overall scene is bright and sunny.

# 中科院融通智能产业科技园

## CAS R.T. INTELLIGENCE PARK

Area: 266800sqm

Address: Tianjin

Incubated Enterprises: 50

Specialized: Intelligence robot, Bio-medical





# 融通陶瓷产业园

## R.T CERAMIC INDUSTRY PARK

Area: 869720sqm  
Address: Tangshan , Hebei  
Incubated Enterprises: 250  
Specialized: Ceramic Industry





# 融通科技企业孵化基地

## **R.T TECHNOLOGY INCUBATOR**

Area: 10000sqm

Address: Beijing

Incubated Enterprises: 80

Specialized: Clean Technology



# EIGHT PLATFORMS ,FOUR SYSTEMS



- FINANCIAL SERVICE SYSTEM
- ENTREPRENEURSHIP TRAINING
- INNOVATIVE MARKETING SYSTEM
- TECHNOLOGY SUPPORTING SYSTEM

# INCUBATOR SYSTEM



**We provide various financial paths to help incubated company in different grows periods.**

**Rongtong Equity Investment Funds**

**R.T SEED FUNDS: 5,000,000 \$**

**R.T ANGEL FUNDS: 5,000,000\$**

**R.T CAPITAL & VENTURE FUNDS: 100m \$**

**We have build close relations with lots of international capital venture company like Saif Aisa, Walden Internationl,American Sequoia,IDG ,ect.**

**FINANCIAL SUPPORTING**



## ■ **EQUITY INVESTMENT**

R.T invest on qualified projects by cash or rent .

## ■ **FUNDS INVESTMENT**

R.T has set up an equity investment funds with its strategic cooperations, focused on the fields like new material, bio medicine, medical equipment, information technology, equipment manufacturing, electronic information industry, ect

# **FINANCIAL SUPPORTING**





**IF YOU NEED MORE INFO  
PLEASE CONTACT US**

**[www.bjrtjt.com](http://www.bjrtjt.com)**

yangwenhou@bjrtjt.com  
+86 010 85297016-607